

COMUNE DI SANTA TERESA GALLURA

PIANO PARTICOLAREGGIATO  
della ZONA B  
della frazione di SAN PASQUALE

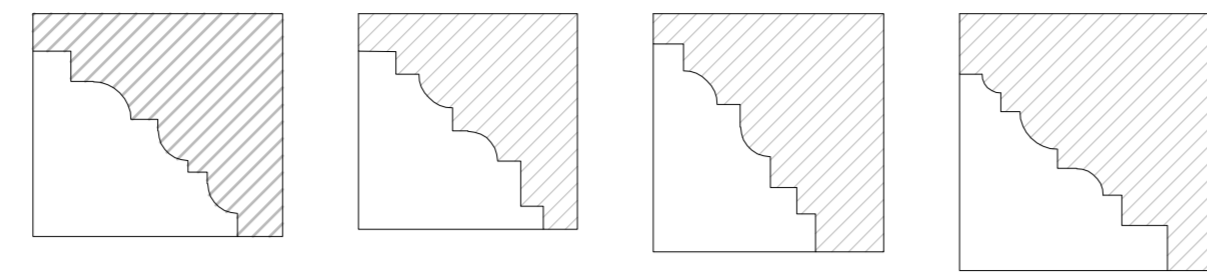
PROGETTO  
Esecutivo

Progetto di: Bernardo Guida  
Architetto in Santa Teresa Gallura

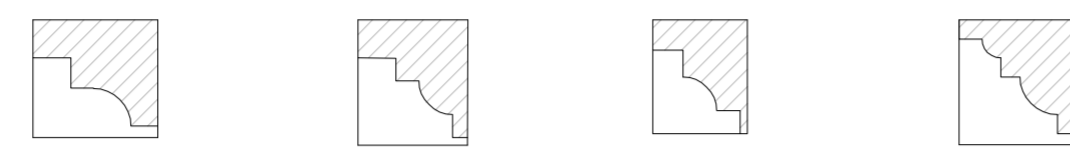
Committente: Comune di Santa Teresa Gallura  
Il Sindaco: Pierantonio Bardanzallu

TAVOLA N° 12: Particolari costruttivi e decorativi

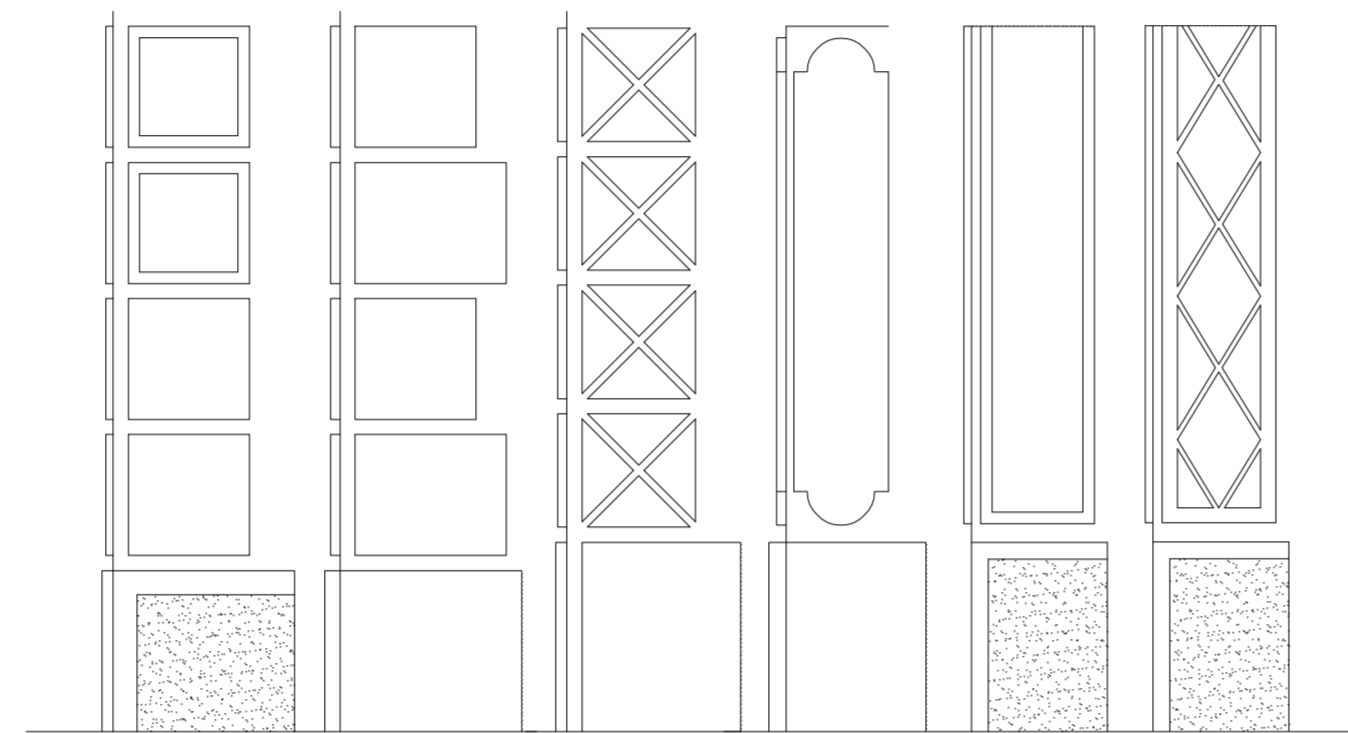
Scala 1: 20 - ottobre 2007



CORNICI DI GRONDA (SEZIONI)



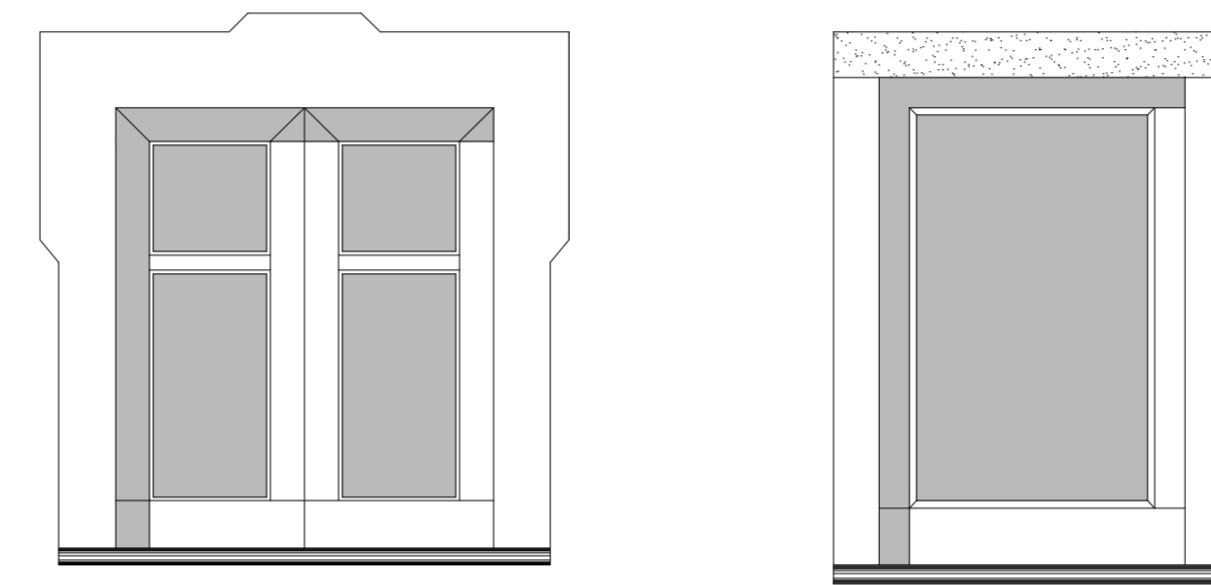
CORNICI MARCAPIANO (SEZIONI)



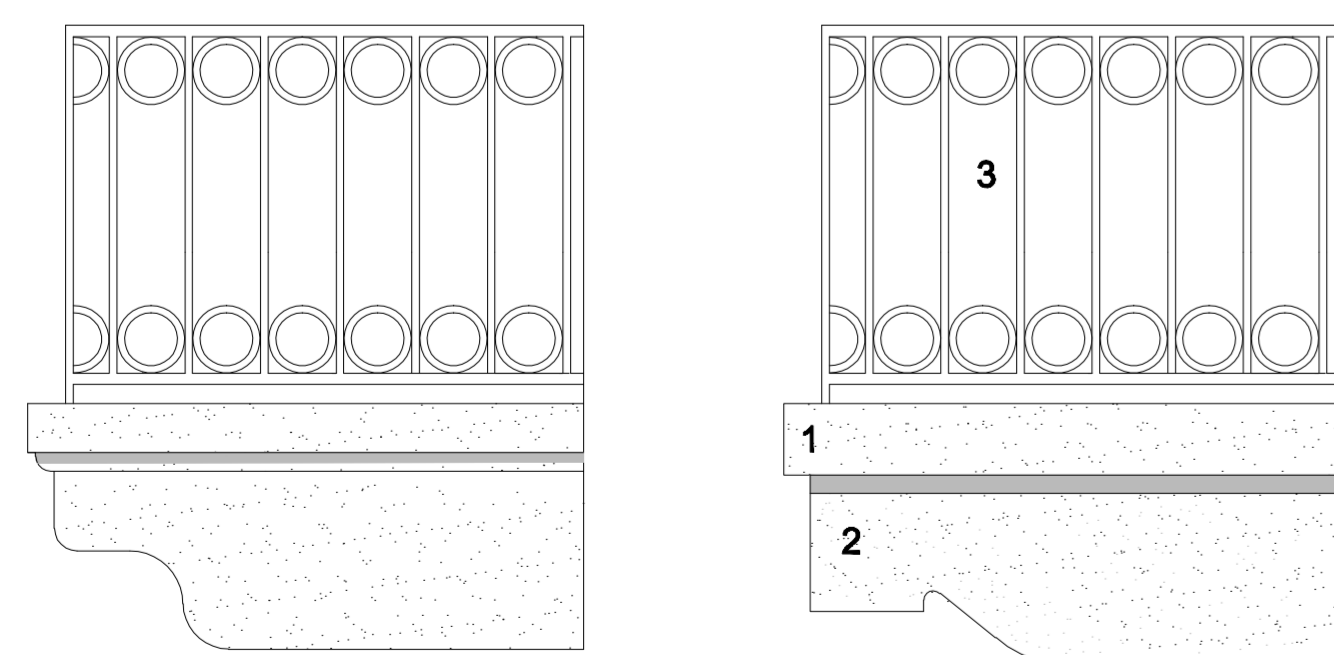
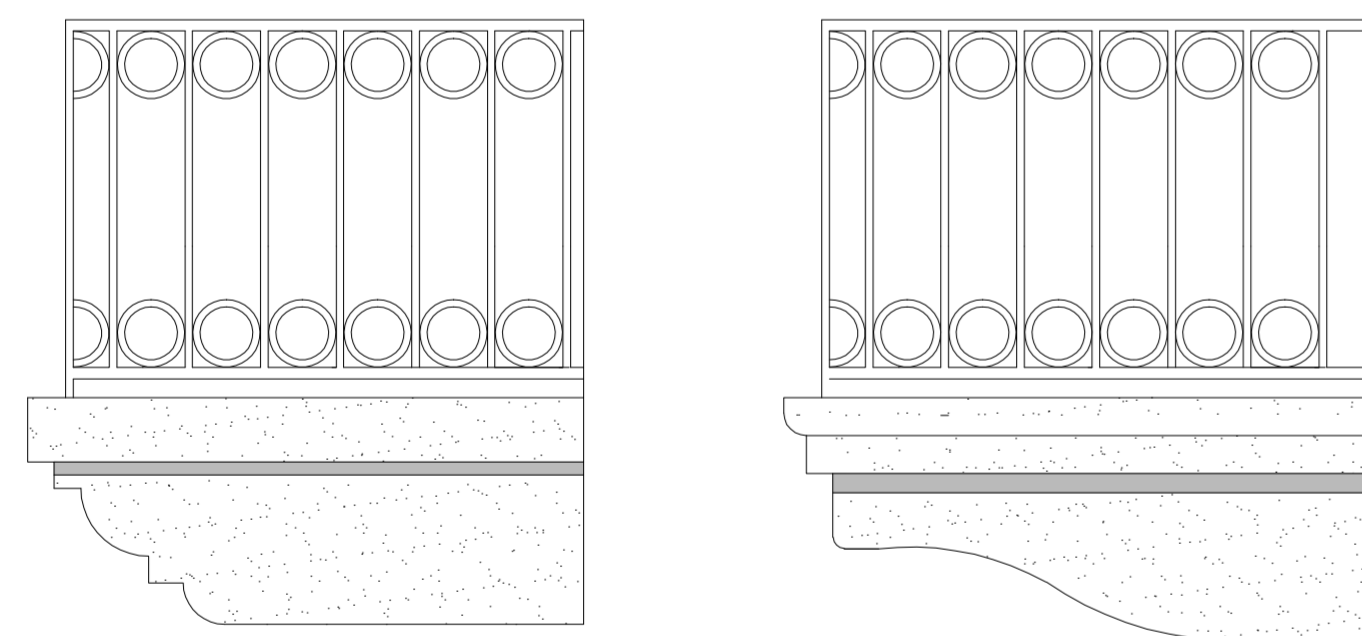
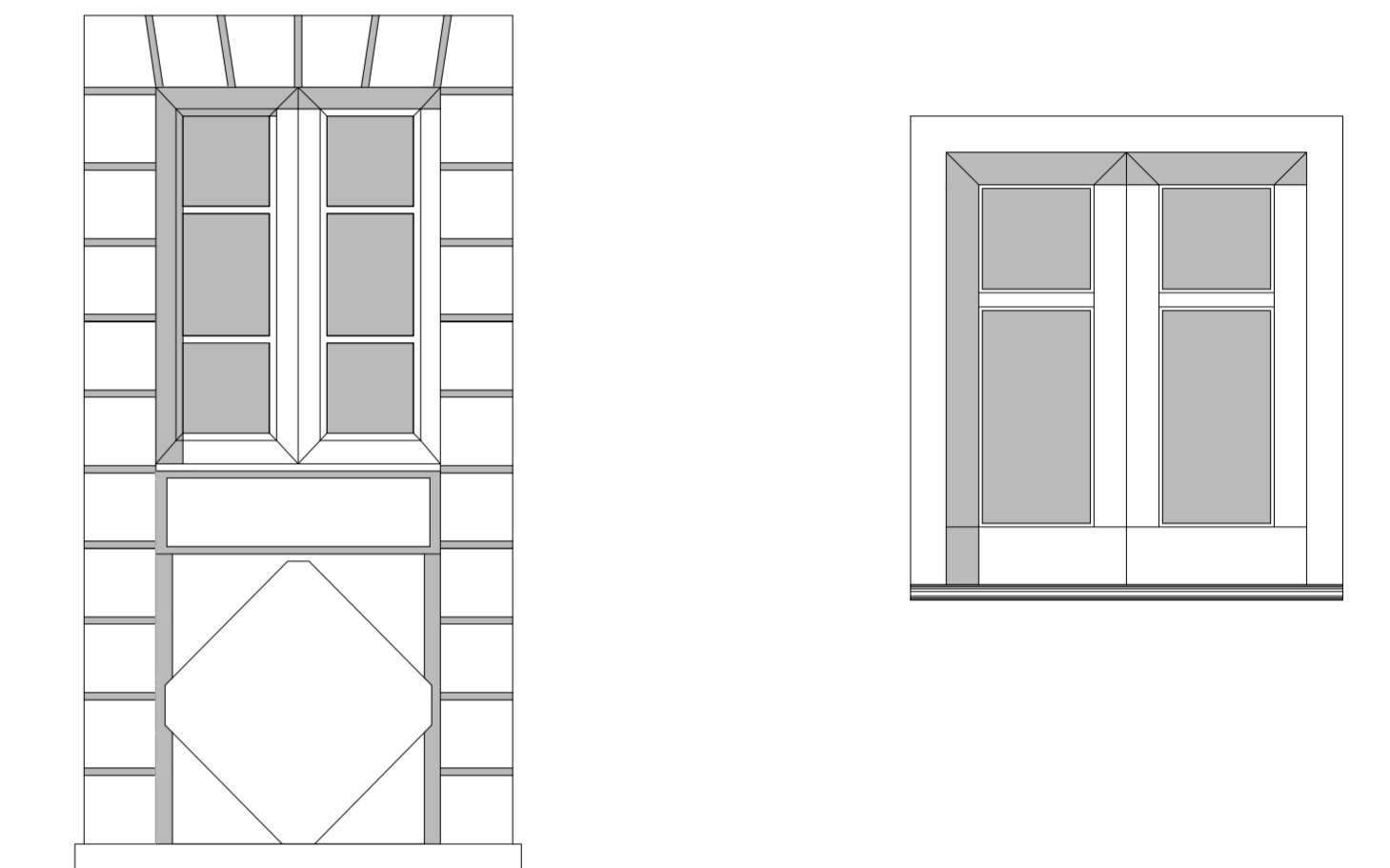
FASCE LATERALI E ZOCCOLO



CORNICI DI PORTE



CORNICI FINESTRE



1 PIANO CALPESTIO IN GRANITO  
2 MENSOLE IN GRANITO  
3 RINGHIERA IN FERRO BATTUTO O IN GHISA

